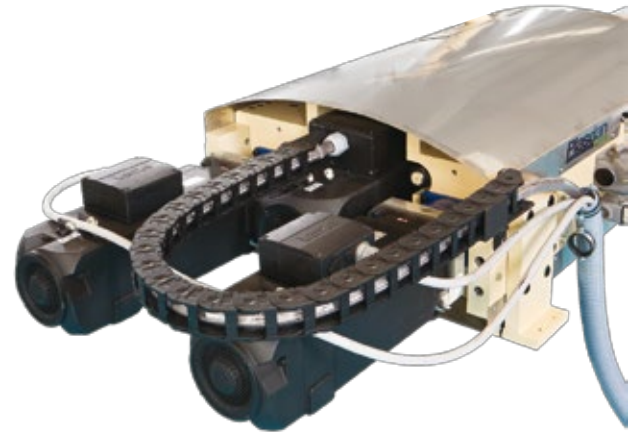




# DIRECT DRIVE TECHNOLOGY



## INJECTION UNIT SPECIFICATIONS

Injection Unit	Units	EL.0310			EL.0610			EL.1520		
		30	35	40	40	45	50	55	60	65
Screw diameter	mm	30	35	40	40	45	50	55	60	65
Swept volume	cc	106,03	168,37	219	251,33	357,85	490,87	653,35	848,23	1078,45
Max. injection pressure, direct	bar	2000	1800	1400	2130	1700	1400	2100	1800	1530
Screw L:D ratio	L/D	22,83	19,63	19,5	22,00	19,56	19,00	22,00	20,00	19,00
Screw stroke	mm	150	175	175	200	225	250	275	300	325
Screw torque, standard	Nm	206,96	313,79	313,79	450,00	618,48	822,00	1063,24	1344,80	1669,23
Nozzle sealing force	kN	40,00	40,00	40,00	40,00	40,00	40,00	70,00	70,00	70,00
Max. nozzle retract stroke	mm	200	200	200	200	200	200	500	500	500
Max. linear velocity of screw, direct	mm/sec	155	155	155	150	150	150	140	140	140
Max. Injection rate, direct	cc/sec	109,56	149,13	169,65	188,50	238,56	294,52	332,00	395,00	464,00
Screw speed range, standard drive	r.p.m.	300	300	300	300	300	300	255	255	255
Electrical Supply	V	400/ 480	400/ 480	400/ 480	400/ 480	400/ 480	400/ 480	400/ 480	400/ 480	400/ 480
Maximum current	A	80	80	80	125	125	125	200	200	200